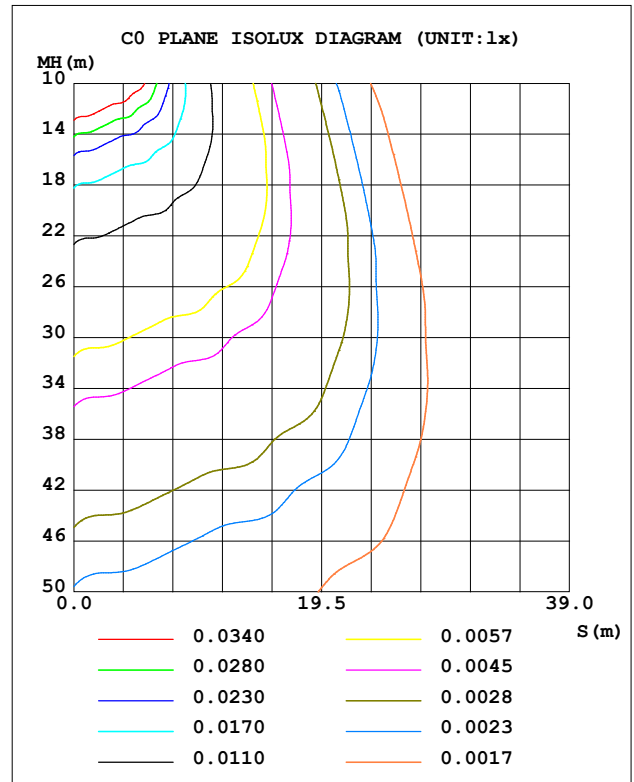
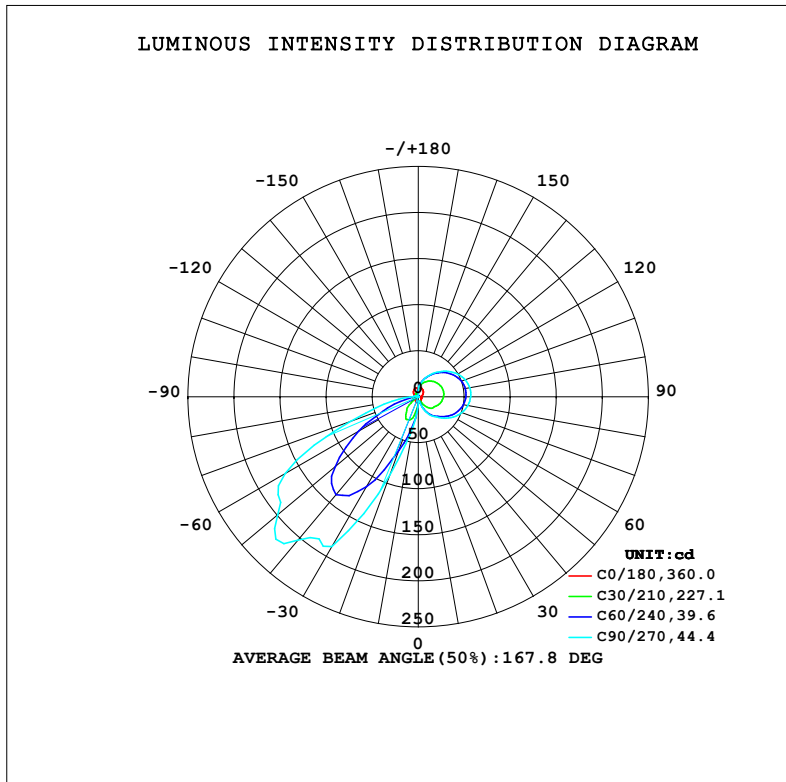


LUMINAIRE PHOTOMETRIC TEST REPORT

NAME: 99LWL06/WH	TYPE:	WEIGHT: 1
SPEC.:	DIM.: 150 x 150 x 25	SERIAL No.: 0
MFR.: Elmark Industries JSC	SUR.: rectangular	Shielding Angle:

DATA OF LAMP		PHOTOMETRIC DATA			
MODEL	99LWL06/WH	I _{max} (cd)	234.9	S/MH (C0/180)	1.25
NOMINAL POWER (W)	6	LOR (%)	75.5	S/MH (C90/270)	4.40
RATED VOLTAGE (V)	230	TOTAL FLUX (lm)	294.41	η UP, DN (C0-180)	21.8, 18.2
NOMINAL FLUX (lm)	390	CIE CLASS	SEMI-D.	η UP, DN (C180-360)	2.3, 33.2
LAMPS INSIDE	1	η up (%)	24.1	CIBSE SHR NOM	0.00
TEST VOLTAGE (V)	230	η down (%)	51.4	CIBSE SHR MAX	0.00



C Range: 0 - 360DEG
C Interval: 10.0DEG
Test Speed: HIGH
Temperature: 25.3°C
Operators:
Test Date: 16 December 2022

γ Range: 0 - 180DEG
γ Interval: 2.5DEG
Test System: EVERFINE GO-2000A_V1 SYSTEM V2.00.456
Humidity: 65.0%
Test Distance: 6.265m [K=1.0000]
Remarks:

ZONAL FLUX DIAGRAM

ZONAL FLUX DIAGRAM:

γ	C0	C45	C90	C135	C180	C225	C270	C315	γ	Φ zone	Φ total	%lum, lamp
10	6.544	5.784	4.954	4.289	6.548	24.24	33.00	19.90	0- 10	0.9901	0.9901	0.34, 0.25
20	6.623	6.508	11.38	4.193	6.404	43.86	89.82	34.26	10- 20	5.159	6.149	2.09, 1.58
30	6.319	15.32	21.00	9.736	5.990	59.81	187.8	43.54	20- 30	15.48	21.63	7.35, 5.55
40	5.224	22.46	28.43	14.95	4.864	61.81	203.3	42.57	30- 40	28.87	50.51	17.2, 13
50	4.046	26.97	36.41	18.44	3.833	48.08	199.0	29.75	40- 50	37.80	88.31	30, 22.6
60	3.500	32.06	44.15	21.75	3.199	25.86	167.1	14.33	50- 60	37.48	125.8	42.7, 32.3
70	3.530	36.31	50.44	24.89	3.175	9.551	78.62	6.491	60- 70	30.65	156.4	53.1, 40.1
80	2.671	39.20	54.74	27.12	2.707	6.036	28.92	4.425	70- 80	23.63	180.1	61.2, 46.2
90	2.035	40.83	56.96	28.41	1.567	4.657	6.386	3.213	80- 90	20.33	200.4	68.1, 51.4
100	3.341	41.20	56.92	28.87	2.726	3.426	4.485	2.355	90-100	19.43	219.8	74.7, 56.4
110	4.762	40.02	54.39	28.25	4.160	3.224	2.710	2.451	100-110	18.42	238.2	80.9, 61.1
120	6.117	37.43	49.60	26.58	5.560	2.236	2.071	1.769	110-120	16.52	254.8	86.5, 65.3
130	7.396	33.69	43.16	24.09	6.903	2.020	0.5230	2.037	120-130	13.79	268.6	91.2, 68.9
140	8.574	29.16	35.80	21.02	8.154	2.353	0.3793	2.214	130-140	10.68	279.2	94.8, 71.6
150	9.561	24.24	28.33	17.64	9.250	2.477	0.3736	1.864	140-150	7.598	286.8	97.4, 73.5
160	10.28	19.27	21.31	14.16	10.09	2.606	0.2767	1.998	150-160	4.781	291.6	99.1, 74.8
170	10.29	14.21	14.62	10.05	9.830	2.215	0.2167	0.2306	160-170	2.291	293.9	99.8, 75.4
180	6.497	6.599	3.559	1.186	6.449	6.602	3.599	1.184	170-180	0.5047	294.4	100, 75.5
DEG	LUMINOUS INTENSITY:cd									UNIT:lm		

Conical surface Flux(90deg): 68.85 lm

%lum = 23.4%
%lamp = 17.7%

Conical surface Flux(130deg): 142.25 lm

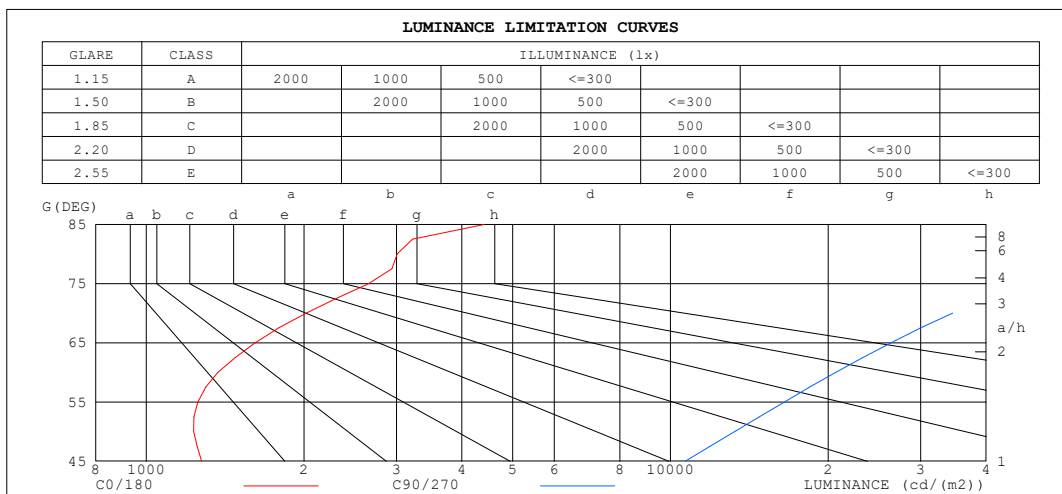
%lum = 48.3%
%lamp = 36.5%

C Range: 0 - 360DEG
C Interval: 10.0DEG
Test Speed: HIGH
Temperature:25.3°C
Operators:
Test Date:16 December 2022

γ Range: 0 - 180DEG
 γ Interval: 2.5DEG
Test System:EVERFINE GO-2000A_V1 SYSTEM V2.00.456
Humidity:65.0%
Test Distance:6.265m [K=1.0000]
Remarks:

LUMINANCE LIMITATION CURVES

NAME: 99LWL06/WH	TYPE:	WEIGHT: 1
SPEC.:	DIM.: 150 x 150 x 25	SERIAL No.: 0
MFR.: Elmark Industries JSC	SUR.: rectangular	Shielding Angle:



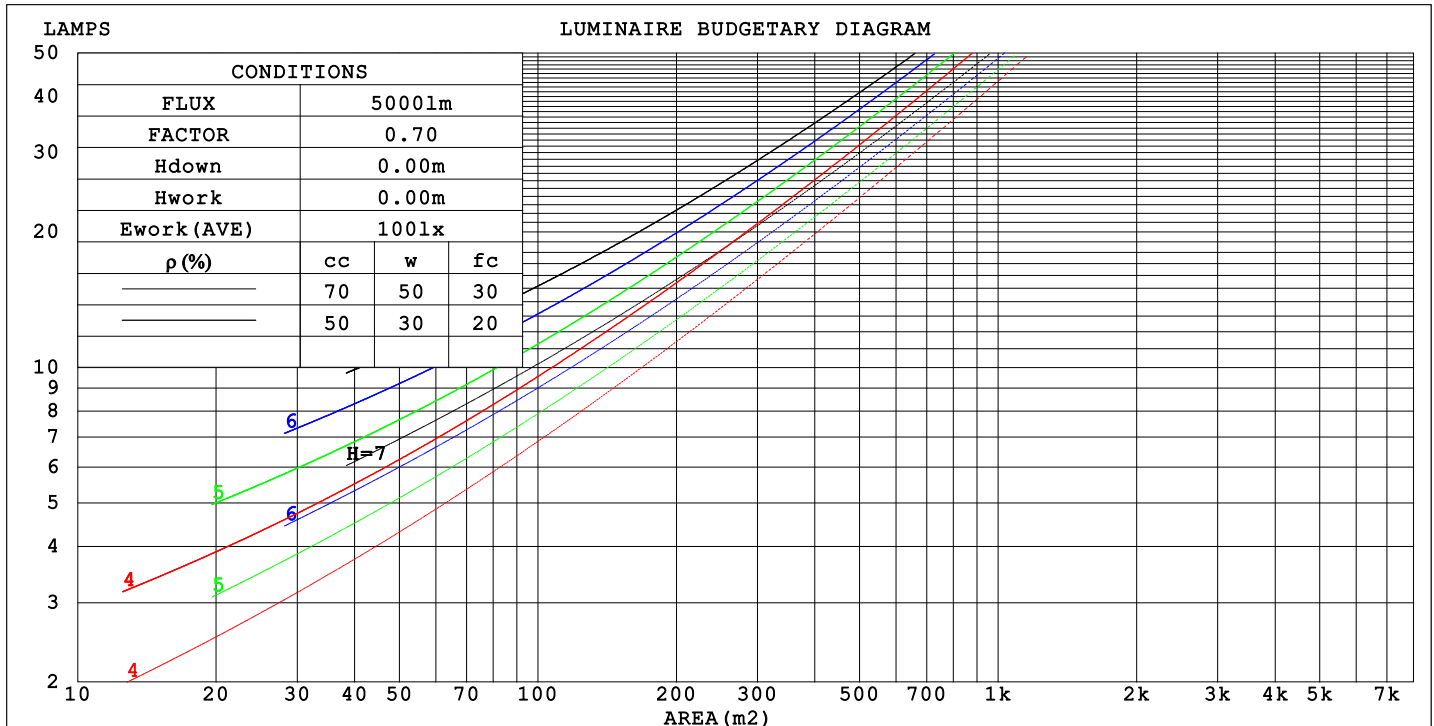
C Range: 0 - 360DEG
C Interval: 10.0DEG
Test Speed: HIGH
Temperature: 25.3°C
Operators:
Test Date: 16 December 2022

γ Range: 0 - 180DEG
γ Interval: 2.5DEG
Test System: EVERFINE GO-2000A_V1 SYSTEM V2.00.456
Humidity: 65.0%
Test Distance: 6.265m [K=1.0000]
Remarks:

CU AND LUMINAIRE BUDGETARY ESTIMATE DIAGRAM

NAME: 99LWL06/WH	TYPE:	WEIGHT: 1
SPEC.:	DIM.: 150 x 150 x 25	SERIAL No.: 0
MFR.: Elmark Industries JSC	SUR.: rectangular	Shielding Angle:

pcc	80%			70%			50%			30%			10%			0
pw	50%	30%	10%	50%	30%	10%	50%	30%	10%	50%	30%	10%	50%	30%	10%	0
pfc	20%			20%			20%			20%			20%			0
RCR	RCR:Room Cavity Ratio															



C Range: 0 - 360DEG
C Interval: 10.0DEG
Test Speed: HIGH
Temperature: 25.3°C
Operators:
Test Date: 16 December 2022

γ Range: 0 - 180DEG
γ Interval: 2.5DEG
Test System: EVERFINE GO-2000A_V1 SYSTEM V2.00.456
Humidity: 65.0%
Test Distance: 6.265m [K=1.0000]
Remarks:

WEC AND CCEC

NAME: 99LWL06/WH	TYPE:	WEIGHT: 1
SPEC.:	DIM.: 150 x 150 x 25	SERIAL No.: 0
MFR.: Elmark Industries JSC	SUR.: rectangular	Shielding Angle:

pcc	80%			70%			50%			30%			10%			0
pw	50%	30%	10%	50%	30%	10%	50%	30%	10%	50%	30%	10%	50%	30%	10%	0
pfc	20%			20%			20%			20%			20%			0
RCR	RCR:Room Cavity Ratio						Wall Exitance Coefficients(WEC)									
0.0																
1.0	.289	.164	.052	.276	.157	.050	.252	.144	.046	.230	.133	.043	.210	.121	.039	
2.0	.251	.138	.042	.240	.132	.041	.218	.121	.038	.198	.111	.035	.179	.101	.032	
3.0	.224	.119	.036	.214	.114	.034	.194	.105	.032	.176	.096	.030	.158	.088	.027	
4.0	.203	.105	.031	.193	.101	.030	.175	.093	.028	.158	.085	.026	.142	.077	.024	
5.0	.185	.094	.027	.176	.090	.026	.159	.083	.024	.144	.076	.023	.129	.069	.021	
6.0	.169	.085	.024	.161	.081	.023	.146	.075	.022	.132	.068	.020	.118	.062	.019	
7.0	.156	.077	.022	.149	.074	.021	.135	.068	.020	.122	.062	.018	.109	.057	.017	
8.0	.145	.071	.020	.138	.068	.019	.125	.062	.018	.113	.057	.016	.101	.052	.015	
9.0	.135	.065	.018	.129	.063	.018	.117	.058	.016	.105	.053	.015	.095	.048	.014	
10.0	.126	.061	.017	.120	.058	.016	.109	.054	.015	.099	.049	.014	.089	.045	.013	

pcc	80%			70%			50%			30%			10%			0
pw	50%	30%	10%	50%	30%	10%	50%	30%	10%	50%	30%	10%	50%	30%	10%	0
pfc	20%			20%			20%			20%			20%			0
RCR	RCR:Room Cavity Ratio						Ceiling Cavity Exitance Coefficients (CCEC)									
0.0	.327	.327	.327	.280	.280	.280	.191	.191	.191	.110	.110	.110	.035	.035	.035	
1.0	.325	.303	.282	.278	.260	.243	.190	.179	.168	.110	.103	.098	.035	.033	.032	
2.0	.321	.286	.257	.275	.246	.222	.188	.170	.155	.109	.099	.091	.035	.032	.030	
3.0	.316	.274	.241	.271	.236	.209	.186	.164	.146	.107	.096	.086	.034	.031	.028	
4.0	.310	.265	.230	.266	.229	.200	.183	.159	.141	.106	.093	.083	.034	.030	.027	
5.0	.305	.258	.223	.262	.223	.194	.180	.156	.137	.104	.091	.081	.034	.030	.027	
6.0	.300	.252	.218	.258	.218	.190	.178	.153	.134	.103	.090	.080	.033	.029	.026	
7.0	.295	.247	.214	.253	.214	.187	.175	.150	.132	.102	.089	.079	.033	.029	.026	
8.0	.290	.243	.211	.249	.211	.184	.173	.148	.131	.100	.087	.078	.032	.029	.026	
9.0	.285	.240	.209	.246	.208	.183	.170	.146	.130	.099	.086	.077	.032	.028	.026	
10.0	.281	.237	.208	.242	.206	.181	.168	.145	.129	.098	.086	.077	.032	.028	.025	

C Range: 0 - 360DEG
C Interval: 10.0DEG
Test Speed: HIGH
Temperature:25.3°C
Operators:
Test Date:16 December 2022

γ Range: 0 - 180DEG
γ Interval: 2.5DEG
Test System:EVERFINE GO-2000A_V1 SYSTEM V2.00.456
Humidity:65.0%
Test Distance:6.265m [K=1.0000]
Remarks:

UGR(Unified Glare Rating) Table

NAME: 99LWL06/WH					TYPE:			WEIGHT: 1			
SPEC.:					DIM.: 150 x 150 x 25			SERIAL No.: 0			
MFR.: Elmark Industries JSC					SUR.: rectangular			Shielding Angle:			
ceiling/cavity	0.7	0.7	0.5	0.5	0.3	0.7	0.7	0.5	0.5	0.3	
walls	0.5	0.3	0.5	0.3	0.3	0.5	0.3	0.5	0.3	0.3	
working plane	0.2	0.2	0.2	0.2	0.2	0.2	0.2	0.2	0.2	0.2	
Room dimensions		Viewed crosswise					Viewed endwise				
x = 2H y = 2H		16.3	17.6	17.0	18.3	19.1	24.4	25.6	25.0	26.3	27.2
	3H	18.2	19.4	18.9	20.1	21.0	28.5	29.7	29.2	30.4	31.3
	4H	19.1	20.2	19.8	20.9	21.8	30.8	31.9	31.5	32.6	33.5
	6H	20.0	21.0	20.7	21.7	22.7	33.2	34.2	34.0	35.0	35.9
	8H	20.3	21.3	21.1	22.1	23.0	34.5	35.5	35.3	36.3	37.2
	12H	20.7	21.6	21.5	22.4	23.4	36.0	36.9	36.8	37.7	38.7
4H	2H	20.6	21.7	21.3	22.4	23.3	24.9	26.0	25.6	26.7	27.6
	3H	22.8	23.8	23.6	24.5	25.5	29.3	30.3	30.1	31.0	32.0
	4H	23.9	24.8	24.7	25.5	26.5	31.8	32.7	32.6	33.5	34.4
	6H	24.9	25.6	25.7	26.4	27.4	34.5	35.2	35.3	36.1	37.1
	8H	25.3	26.0	26.1	26.8	27.8	35.9	36.6	36.7	37.5	38.5
	12H	25.6	26.3	26.4	27.1	28.1	37.6	38.2	38.4	39.0	40.1
8H	4H	27.0	27.7	27.8	28.6	29.6	32.2	32.9	33.0	33.7	34.7
	6H	28.5	29.1	29.4	30.0	31.0	35.2	35.8	36.0	36.6	37.7
	8H	29.2	29.7	30.1	30.6	31.7	36.9	37.4	37.7	38.3	39.3
	12H	29.8	30.3	30.7	31.1	32.2	38.8	39.2	39.6	40.1	41.2
12H	4H	28.1	28.7	28.9	29.5	30.6	32.2	32.8	33.0	33.7	34.7
	6H	29.9	30.4	30.8	31.3	32.4	35.3	35.8	36.1	36.7	37.7
	8H	30.8	31.3	31.7	32.2	33.3	37.1	37.6	38.0	38.4	39.5
Variations with the observer position at spacings(CIE Pub.117):											
S = 1.0H	+ 0.1 / - 0.1					+ 0.1 / - 0.1					
1.5H	+ 0.1 / - 0.1					+ 0.2 / - 0.3					
2.0H	+ 0.3 / - 0.3					+ 0.3 / - 0.4					

CIE Pub.117, 390.0 lm Total Lamp Luminous Flux Correct (8log(F/F0) = -3.3)
Area: 0.004077 m2

C Range: 0 - 360DEG
C Interval: 10.0DEG
Test Speed: HIGH
Temperature:25.3°C
Operators:
Test Date:16 December 2022

γ Range: 0 - 180DEG
γ Interval: 2.5DEG
Test System:EVERFINE GO-2000A_V1 SYSTEM V2.00.456
Humidity:65.0%
Test Distance:6.265m [K=1.0000]
Remarks:

UTILIZATION FACTORS TABLE

NAME: 99LWL06/WH	TYPE:	WEIGHT: 1
SPEC.:	DIM.: 150 x 150 x 25	SERIAL No.: 0
MFR.: Elmark Industries JSC	SUR.: rectangular	Shielding Angle:

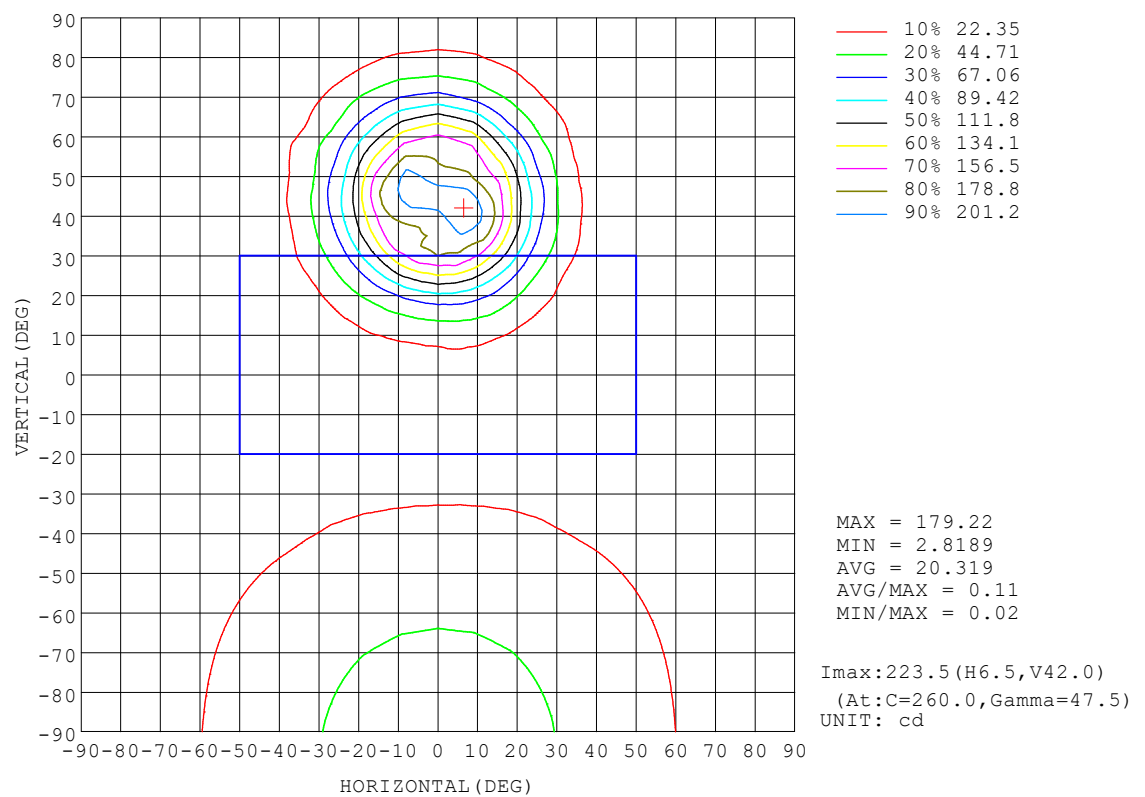
REFLECTANCE										
Ceiling	0.8	0.8	0.8	0.7	0.7	0.7	0.5	0.5	0.5	0
Walls	0.7	0.5	0.3	0.7	0.5	0.3	0.7	0.5	0.3	0
Working plane	0.2	0.2	0.2	0.2	0.2	0.2	0.2	0.2	0.2	0
ROOM INDEX	UTILIZATION FACTORS (PERCENT) $k(RI) \times RCR = 5$									
$k = 0.60$	30	21	15	29	20	15	27	19	14	9
0.80	38	27	21	36	26	20	33	25	19	13
1.00	44	34	27	42	32	26	38	32	25	17
1.25	49	39	33	47	38	32	43	35	30	21
1.50	54	44	37	51	42	36	46	39	33	24
2.00	60	51	44	56	48	42	51	44	39	28
2.50	63	55	49	60	52	47	53	48	43	31
3.00	66	59	53	63	56	51	56	51	46	33
4.00	70	64	58	66	60	56	59	54	51	37
5.00	72	67	62	68	63	59	61	57	53	39
ROOM INDEX	UF(total)									Direct
According to DIN EN 13032-2 2004			Suspended					SHRNOM = 1.25		

C Range: 0 - 360DEG
C Interval: 10.0DEG
Test Speed: HIGH
Temperature: 25.3°C
Operators:
Test Date: 16 December 2022

γ Range: 0 - 180DEG
γ Interval: 2.5DEG
Test System: EVERFINE GO-2000A_V1 SYSTEM V2.00.456
Humidity: 65.0%
Test Distance: 6.265m [K=1.0000]
Remarks:

ISOCANDELA DIAGRAM

NAME: 99LWL06/WH	TYPE:	WEIGHT: 1
SPEC.:	DIM.: 150 x 150 x 25	SERIAL No.: 0
MFR.: Elmark Industries JSC	SUR.: rectangular	Shielding Angle:

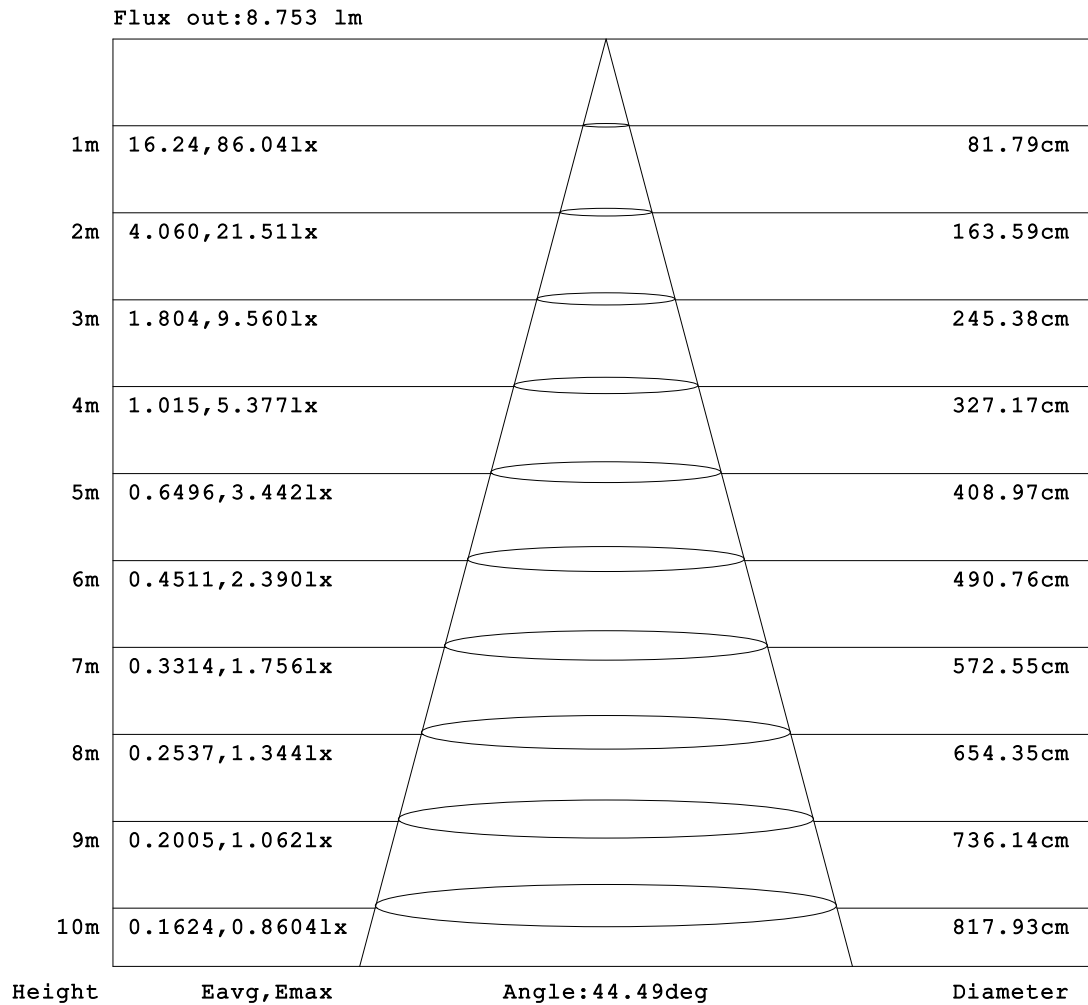


C Range: 0 - 360DEG
 C Interval: 10.0DEG
 Test Speed: HIGH
 Temperature:25.3°C
 Operators:
 Test Date:16 December 2022

γ Range: 0 - 180DEG
 γ Interval: 2.5DEG
 Test System:EVERFINE GO-2000A_V1 SYSTEM V2.00.456
 Humidity:65.0%
 Test Distance:6.265m [K=1.0000]
 Remarks:

AAI Figure

NAME: 99LWL06/WH	TYPE:	WEIGHT: 1
SPEC.:	DIM.: 150 x 150 x 25	SERIAL No.: 0
MFR.: Elmark Industries JSC	SUR.: rectangular	Shielding Angle:



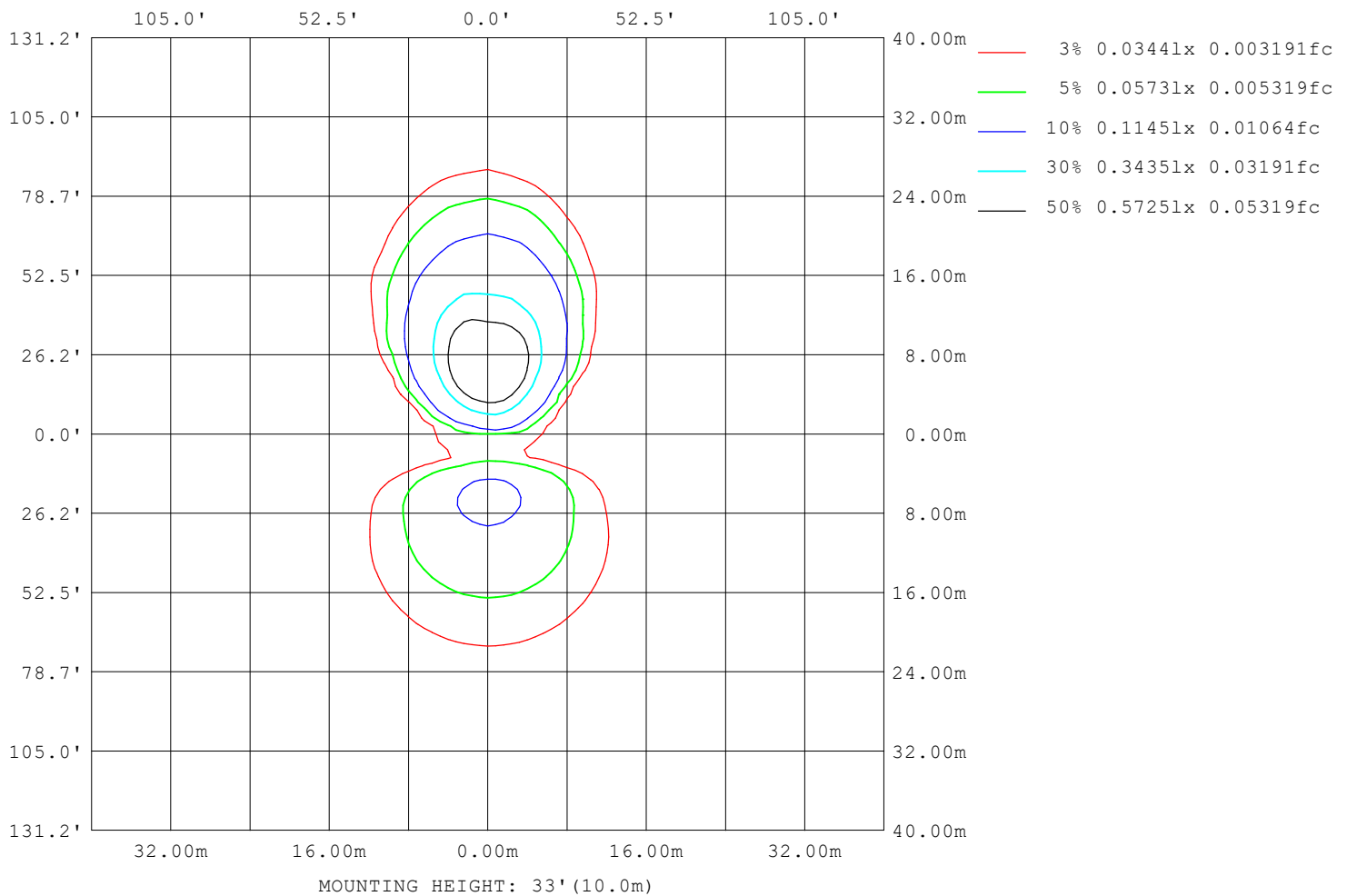
Note: The Curves indicate the illuminated area and the average illumination when the luminaire is at different distance.

C Range: 0 - 360DEG
 C Interval: 10.0DEG
 Test Speed: HIGH
 Temperature: 25.3°C
 Operators:
 Test Date: 16 December 2022

γ Range: 0 - 180DEG
 γ Interval: 2.5DEG
 Test System: EVERFINE GO-2000A_V1 SYSTEM V2.00.456
 Humidity: 65.0%
 Test Distance: 6.265m [K=1.0000]
 Remarks:

ISOLUX DIAGRAM

NAME: 99LWL06/WH	TYPE:	WEIGHT: 1
SPEC.:	DIM.: 150 x 150 x 25	SERIAL No.: 0
MFR.: Elmark Industries JSC	SUR.: rectangular	Shielding Angle:



C Range: 0 - 360DEG
 C Interval: 10.0DEG
 Test Speed: HIGH
 Temperature: 25.3°C
 Operators:
 Test Date: 16 December 2022

γ Range: 0 - 180DEG
 γ Interval: 2.5DEG
 Test System: EVERFINE GO-2000A_V1 SYSTEM V2.00.456
 Humidity: 65.0%
 Test Distance: 6.265m [K=1.0000]
 Remarks:

LED Avg.L Report

NAME: 99LWL06/WH	TYPE:	WEIGHT: 1
SPEC.:	DIM.: 150 x 150 x 25	SERIAL No.: 0
MFR.: Elmark Industries JSC	SUR.: rectangular	Shielding Angle:

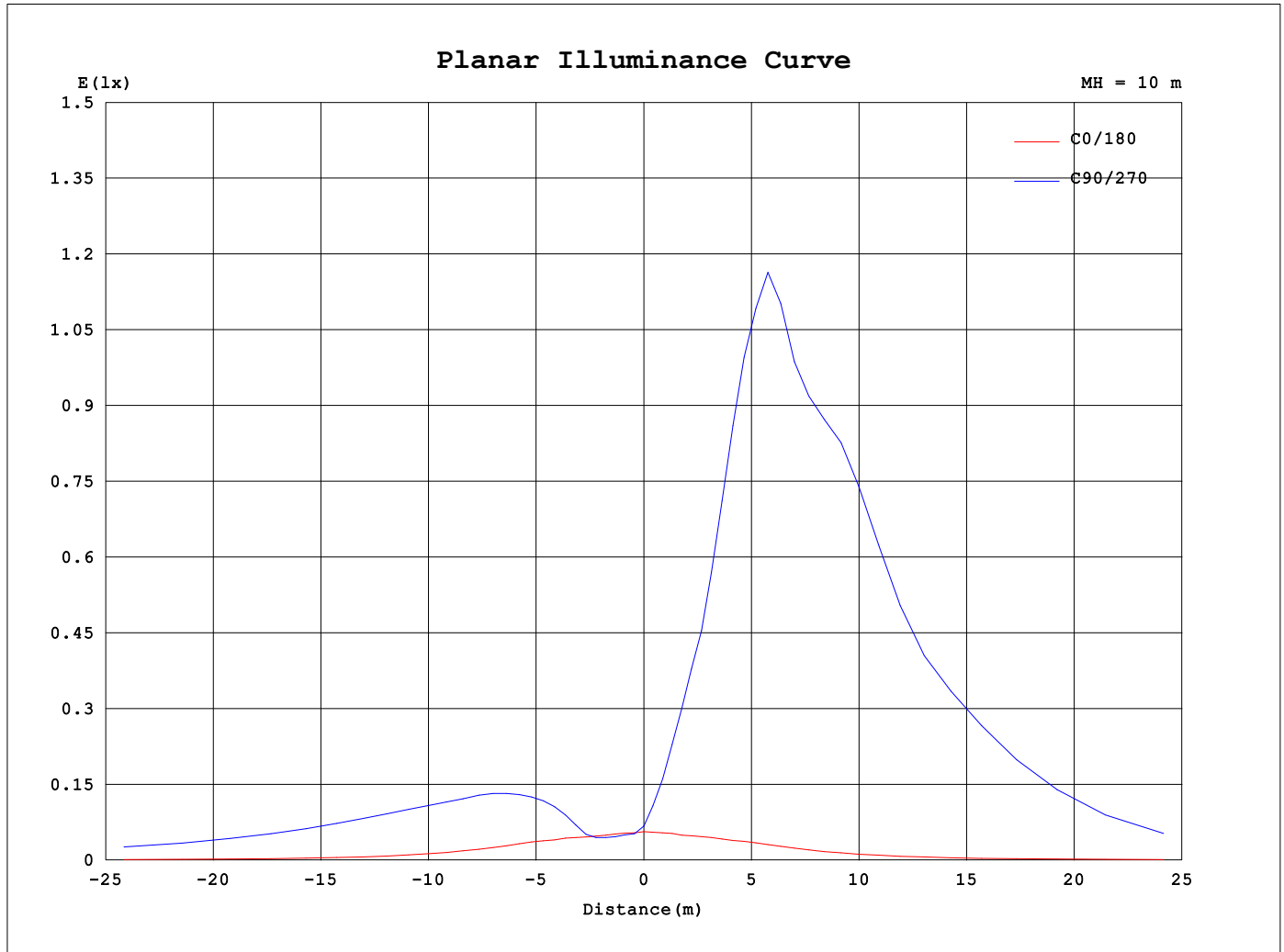
AvgL	cd/m2
L_0~180 (65) av	1923
L_0~180 (75) av	3161
L_0~180 (85) av	4977
L_90~270 (65) av	49935
L_90~270 (75) av	47849
L_90~270 (85) av	100243
L_45 (65) av	12291
L_45 (75) av	17801
L_45 (85) av	54494

Standard: GB/T 29293-2012

C Range: 0 - 360DEG
C Interval: 10.0DEG
Test Speed: HIGH
Temperature:25.3°C
Operators:
Test Date:16 December 2022

γ Range: 0 - 180DEG
γ Interval: 2.5DEG
Test System:EVERFINE GO-2000A_V1 SYSTEM V2.00.456
Humidity:65.0%
Test Distance:6.265m [K=1.0000]
Remarks:

Planar Illuminance Curve



C Range: 0 - 360DEG
 C Interval: 10.0DEG
 Test Speed: HIGH
 Temperature: 25.3°C
 Operators:
 Test Date: 16 December 2022

γ Range: 0 - 180DEG
 γ Interval: 2.5DEG
 Test System: EVERFINE GO-2000A_V1 SYSTEM V2.00.456
 Humidity: 65.0%
 Test Distance: 6.265m [K=1.0000]
 Remarks:

LUMINOUS DISTRIBUTION INTENSITY DATA

NAME: 99LWL06/WH	TYPE:	WEIGHT: 1
SPEC.:	DIM.: 150 x 150 x 25	SERIAL No.: 0
MFR.: Elmark Industries JSC	SUR.: rectangular	Shielding Angle:

Table--1

UNIT: cd

C (DEG) γ (DEG)	0	10	20	30	40	50	60	70	80	90	100	110	120	130	140	150	160	170	180
0	7.09	7.09	7.09	7.09	7.09	7.09	7.09	7.09	7.09	7.09	7.09	7.09	7.09	7.09	7.09	7.09	7.09	7.09	7.09
5	6.82	6.47	6.34	6.23	6.16	6.03	6.00	5.81	5.65	5.35	5.22	4.91	4.73	4.49	4.44	4.65	5.15	5.82	6.91
10	6.54	6.49	6.42	6.14	5.92	5.65	5.53	5.32	5.18	4.95	4.81	4.60	4.44	4.32	4.26	4.01	3.92	4.53	6.55
15	6.40	6.39	6.15	5.73	5.62	5.49	5.72	5.93	6.18	5.98	5.66	4.91	4.38	4.05	3.82	3.74	3.79	3.80	6.51
20	6.62	6.26	5.67	5.32	5.66	7.33	9.55	10.94	11.7	11.4	10.6	8.89	6.83	4.70	3.71	3.40	3.57	3.70	6.40
25	6.48	5.86	5.13	5.43	8.67	12.5	15.3	16.5	17.2	16.6	15.7	13.7	11.4	8.10	4.85	3.31	3.19	3.50	6.33
30	6.32	5.25	4.73	7.68	13.4	17.2	19.8	21.1	21.7	21.0	19.9	17.7	15.0	11.7	7.88	3.85	2.86	3.19	5.99
35	5.82	4.52	4.98	11.62	17.3	21.0	23.9	25.3	26.1	25.2	23.9	21.3	18.3	14.5	10.7	5.95	2.72	2.74	5.46
40	5.22	3.93	7.09	14.9	20.4	24.4	27.5	28.8	29.4	28.4	27.2	24.5	21.3	17.1	12.9	8.29	3.14	2.34	4.86
45	4.61	3.78	10.23	17.5	23.1	26.9	30.1	32.1	33.2	32.2	30.6	27.1	23.4	19.3	14.8	10.0	4.66	2.08	4.28
50	4.05	3.92	12.7	19.5	24.6	29.3	33.7	36.2	37.5	36.4	34.5	30.6	26.1	20.7	16.3	11.5	6.45	2.00	3.83
55	3.67	4.75	14.3	20.4	26.5	32.4	37.3	40.0	41.6	40.4	38.3	33.9	28.9	22.8	17.1	12.5	7.70	2.06	3.44
60	3.50	6.68	15.1	21.4	28.8	35.2	40.6	43.7	45.4	44.1	41.8	37.1	31.6	24.9	18.7	12.8	8.52	2.59	3.20
65	3.49	8.49	15.0	22.9	30.9	37.7	43.6	46.9	48.8	47.5	45.0	39.9	34.0	26.9	20.2	13.7	8.61	3.90	3.14
70	3.53	8.63	15.9	24.2	32.6	39.9	46.2	49.7	51.8	50.4	47.8	42.4	36.1	28.5	21.4	14.6	8.83	4.64	3.17
75	3.51	8.35	16.7	25.4	34.1	41.7	48.3	52.1	54.3	52.9	50.1	44.5	37.9	29.9	22.5	15.4	9.39	4.36	3.16
80	2.67	8.78	17.3	26.2	35.2	43.1	49.9	53.8	56.2	54.7	51.9	46.1	39.2	31.1	23.4	16.0	9.85	4.57	2.71
85	1.97	9.11	17.8	26.9	36.0	44.1	51.1	55.2	57.5	56.1	53.2	47.2	40.2	31.9	24.0	16.5	10.2	4.83	1.57
90	2.03	9.44	18.3	27.5	36.7	44.9	51.8	56.0	58.4	57.0	54.1	48.0	40.9	32.5	24.5	16.9	10.5	5.05	1.57
95	2.64	10.01	18.8	27.9	37.1	45.2	52.2	56.3	58.7	57.3	54.4	48.4	41.3	32.9	24.9	17.3	10.9	5.42	2.03
100	3.34	10.53	19.2	28.1	37.2	45.1	52.0	56.0	58.4	56.9	54.1	48.2	41.2	32.9	25.0	17.5	11.2	5.79	2.73
105	4.06	10.98	19.4	28.1	36.9	44.6	51.2	55.1	57.3	56.0	53.2	47.5	40.7	32.6	25.0	17.6	11.4	6.13	3.45
110	4.76	11.36	19.4	27.8	36.3	43.7	50.0	53.7	55.7	54.4	51.7	46.3	39.8	32.0	24.7	17.5	11.5	6.41	4.16
115	5.45	11.66	19.4	27.3	35.4	42.3	48.2	51.6	53.6	52.3	49.7	44.6	38.5	31.1	24.1	17.3	11.6	6.66	4.86
120	6.12	11.91	19.2	26.7	34.2	40.6	46.0	49.1	50.9	49.6	47.3	42.5	36.8	29.9	23.4	16.9	11.6	6.86	5.56
125	6.77	12.09	18.9	25.8	32.7	38.6	43.5	46.2	47.7	46.5	44.4	40.0	34.9	28.5	22.5	16.5	11.4	7.02	6.24
130	7.40	12.21	18.5	24.8	31.0	36.3	40.6	43.0	44.3	43.2	41.2	37.3	32.6	26.9	21.4	15.9	11.3	7.16	6.90
135	8.00	12.25	18.0	23.6	29.2	33.8	37.5	39.5	40.6	39.5	37.9	34.3	30.3	25.2	20.2	15.2	11.0	7.26	7.55
140	8.57	12.25	17.4	22.3	27.1	31.1	34.3	35.9	36.7	35.8	34.3	31.3	27.7	23.3	18.9	14.5	10.7	7.31	8.15
145	9.10	12.18	16.6	21.0	25.1	28.4	31.0	32.2	32.9	32.0	30.8	28.2	25.1	21.3	17.5	13.7	10.3	7.32	8.73
150	9.56	12.03	15.8	19.5	22.9	25.6	27.7	28.6	29.1	28.3	27.2	25.0	22.5	19.3	16.1	12.8	9.92	7.29	9.25
155	9.96	11.80	14.9	17.9	20.7	22.8	24.4	25.1	25.5	24.7	23.8	22.0	20.0	17.3	14.6	11.8	9.44	7.21	9.71
160	10.28	11.49	13.9	16.3	18.4	20.1	21.3	21.7	22.0	21.3	20.6	19.1	17.4	15.3	13.1	10.8	8.89	6.95	10.09
165	10.49	11.14	12.9	14.6	16.2	17.3	18.2	18.4	18.5	18.0	17.4	16.2	14.9	13.2	11.6	9.65	7.57	5.37	10.29
170	10.29	10.78	11.77	12.8	13.8	14.6	15.0	15.1	15.1	14.6	14.1	13.3	12.3	11.0	9.12	6.61	4.65	3.16	9.83
175	9.09	10.59	10.80	11.13	11.55	11.75	11.9	11.8	11.7	11.3	10.9	10.3	8.75	6.39	4.59	3.16	2.07	1.23	8.36
180	6.50	6.53	6.62	6.61	6.65	6.55	6.47	6.16	5.46	3.56	2.76	2.31	1.91	1.40	0.98	0.66	0.48	0.35	6.45

C Range: 0 - 360DEG

C Interval: 10.0DEG

Test Speed: HIGH

Temperature:25.3°C

Operators:

Test Date:16 December 2022

γ Range: 0 - 180DEG

γ Interval: 2.5DEG

Test System:EVERFINE GO-2000A_V1 SYSTEM V2.00.456

Humidity:65.0%

Test Distance:6.265m [K=1.0000]

Remarks:

LUMINOUS DISTRIBUTION INTENSITY DATA

NAME: 99LWL06/WH	TYPE:	WEIGHT: 1
SPEC.:	DIM.: 150 x 150 x 25	SERIAL No.: 0
MFR.: Elmark Industries JSC	SUR.: rectangular	Shielding Angle:

Table--2

UNIT: cd

C (DEG) γ (DEG)	190	200	210	220	230	240	250	260	270	280	290	300	310	320	330	340	350		
0	7.09	7.09	7.09	7.09	7.09	7.09	7.09	7.09	7.09	7.09	7.09	7.09	7.09	7.09	7.09	7.09	7.09		
5	7.83	8.99	10.30	12.5	14.8	16.3	17.1	17.4	17.1	16.7	16.0	15.2	14.0	12.7	11.3	9.81	8.22		
10	8.14	10.86	16.5	22.5	25.9	28.6	31.6	33.2	33.0	32.2	30.2	27.2	22.9	17.0	12.9	10.7	7.99		
15	8.18	13.1	24.1	29.3	37.4	45.9	50.2	53.0	52.9	50.9	46.1	38.4	30.2	23.9	15.6	11.0	6.74		
20	7.50	14.6	26.8	36.7	50.8	61.7	75.6	87.4	89.8	84.9	70.1	55.4	41.5	27.3	17.7	11.1	5.79		
25	6.79	13.7	27.4	44.2	60.4	87.5	116	135	140	130	104	75.3	49.6	31.2	17.9	9.11	4.60		
30	6.49	12.35	27.4	47.2	72.1	113	156	186	188	176	141	95.1	56.2	31.5	17.2	6.87	4.00		
35	6.51	9.34	24.2	47.2	80.0	131	186	195	188	200	170	111	59.8	29.7	15.4	5.67	4.03		
40	6.14	7.32	19.6	43.9	79.3	139	196	204	203	227	185	113	58.2	27.7	9.54	4.56	3.85		
45	5.76	6.46	16.9	38.9	74.0	133	203	232	219	221	173	104	50.4	24.7	7.26	4.19	3.79		
50	5.19	6.45	10.36	30.5	65.3	118	192	231	199	186	154	89.8	41.7	18.4	5.79	4.31	3.48		
55	4.63	6.06	7.35	24.1	51.8	96.2	157	200	186	173	128	68.7	31.1	12.1	4.67	4.09	3.11		
60	4.13	5.59	6.59	12.7	38.7	74.7	119	162	167	148	94.1	50.9	21.9	7.15	4.62	3.77	2.70		
65	3.78	4.94	6.41	8.62	29.9	51.3	84.6	116	125	105	62.7	33.8	14.2	5.35	4.41	3.30	2.43		
70	3.55	4.36	5.86	6.59	12.4	35.7	58.1	74.8	78.6	62.7	42.1	23.1	8.22	4.86	3.99	2.84	2.27		
75	3.46	3.92	5.10	6.34	7.82	20.7	34.3	47.3	48.1	42.0	26.0	13.3	5.33	4.55	3.42	2.52	2.20		
80	3.43	3.62	4.42	5.67	6.39	9.51	19.0	29.1	28.9	24.3	15.7	6.69	4.90	3.98	2.88	2.32	2.18		
85	3.36	3.42	3.87	4.95	5.89	6.25	8.82	14.6	15.1	11.6	6.87	5.26	4.35	3.35	2.52	2.21	2.12		
90	2.83	3.31	3.47	4.17	5.13	5.83	5.97	6.30	6.39	5.78	5.36	4.65	3.66	2.79	2.30	2.15	1.55		
95	1.89	3.28	3.25	3.56	4.26	5.11	5.32	5.45	5.28	5.09	4.61	3.83	2.99	2.44	2.21	2.11	1.14		
100	2.39	3.08	3.33	3.26	3.58	4.09	4.53	4.71	4.48	4.22	3.70	3.09	2.49	2.23	2.20	1.61	1.49		
105	3.05	2.58	3.48	3.30	3.22	3.40	3.59	3.66	3.49	3.31	2.87	2.52	2.32	2.28	2.12	1.70	2.04		
110	3.73	3.17	2.63	3.35	3.10	2.96	2.92	2.86	2.71	2.61	2.47	2.30	2.43	2.47	1.79	2.28	2.48		
115	4.40	3.64	2.57	2.78	3.10	2.80	2.60	2.41	2.30	2.24	2.24	2.38	2.43	1.80	2.10	2.68	2.85		
120	5.10	4.09	2.87	2.08	2.39	2.71	2.48	2.22	2.07	2.09	2.24	2.26	1.65	1.88	2.40	2.98	3.22		
125	5.77	4.68	3.13	2.25	1.60	1.52	1.96	1.98	1.82	1.84	1.62	1.30	1.61	2.12	2.63	3.21	3.57		
130	6.41	5.24	3.46	2.41	1.64	1.15	0.80	0.64	0.52	0.61	0.97	1.39	1.78	2.28	2.81	3.53	3.89		
135	7.02	5.74	3.80	2.65	1.76	1.20	0.79	0.53	0.40	0.48	0.95	1.42	1.85	2.39	2.94	3.85	4.22		
140	7.58	6.38	4.05	2.81	1.91	1.29	0.79	0.50	0.38	0.40	0.79	1.39	1.90	2.51	3.16	3.96	4.51		
145	8.08	6.89	4.27	2.91	1.95	1.28	0.77	0.50	0.38	0.43	0.58	0.90	1.82	2.51	3.13	4.25	4.83		
150	8.62	7.20	4.56	3.00	1.97	1.26	0.76	0.50	0.37	0.27	0.33	0.56	1.51	2.20	2.90	4.83	5.18		
155	9.19	8.19	4.68	3.15	1.99	1.26	0.76	0.50	0.31	0.27	0.39	0.80	1.33	2.04	3.41	5.27	5.44		
160	9.55	8.05	5.17	3.13	2.09	1.33	0.76	0.48	0.28	0.17	0.23	0.49	1.43	2.54	3.66	4.32	4.95		
165	9.00	6.92	5.33	3.56	2.05	1.30	0.73	0.36	0.22	0.19	0.17	0.19	0.31	0.70	1.63	2.59	3.37		
170	7.24	5.35	3.88	2.70	1.74	0.95	0.56	0.35	0.22	0.23	0.20	0.23	0.22	0.24	0.40	0.81	1.60		
175	5.60	4.13	3.07	2.11	1.44	0.90	0.58	0.39	0.29	0.31	0.28	0.30	0.27	0.29	0.28	0.30	0.46		
180	6.52	6.61	6.60	6.65	6.55	6.50	6.18	5.48	3.60	2.75	2.32	1.89	1.40	0.98	0.65	0.48	0.34		

C Range: 0 - 360DEG

C Interval: 10.0DEG

Test Speed: HIGH

Temperature:25.3°C

Operators:

Test Date:16 December 2022

γ Range: 0 - 180DEG

γ Interval: 2.5DEG

Test System:EVERFINE GO-2000A_V1 SYSTEM V2.00.456

Humidity:65.0%

Test Distance:6.265m [K=1.0000]

Remarks: